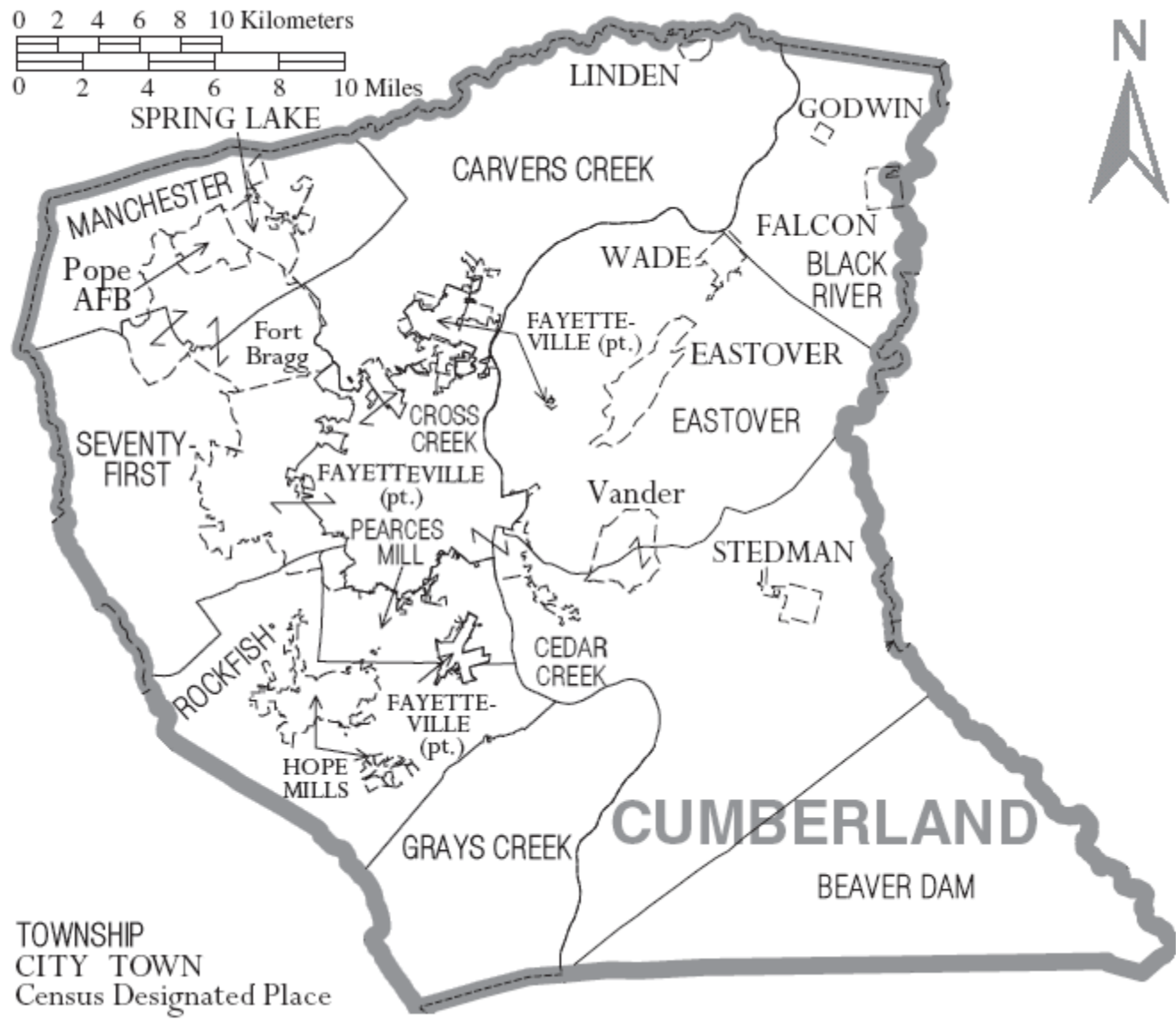
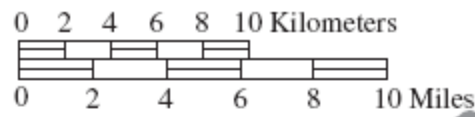


<https://www.loc.gov/resource/g3904f.ct003341/?r=-0.438,-0.165,1.583,0.819,0>

- Historic Map of Cumberland County, North Carolina.
- Note: Still searching for the exact location of Rice's Land.

Flea Hill (circa 1868)





CUMBERLAND COUNTY
THIRD DISTRICT

SCALE
MILES



NORTH CAROLINA COUNTY ROAD SURVEY 1930
PREPARED UNDER THE DIRECTION OF
STATE HIGHWAY COMMISSION
STATE TAX COMMISSION
U. S. BUREAU OF PUBLIC ROADS

STATE HIGHWAYS - 109.87 MILES	
COUNTY HIGHWAYS	
CLASS	
A	74.9
B	140.2
C	131.8
TOTAL	346.9
TOTAL	
H. S.	0.3
T. S. G.	806.7
GRADED	0.0
UNIMP.	2.0
TOTAL	809.0

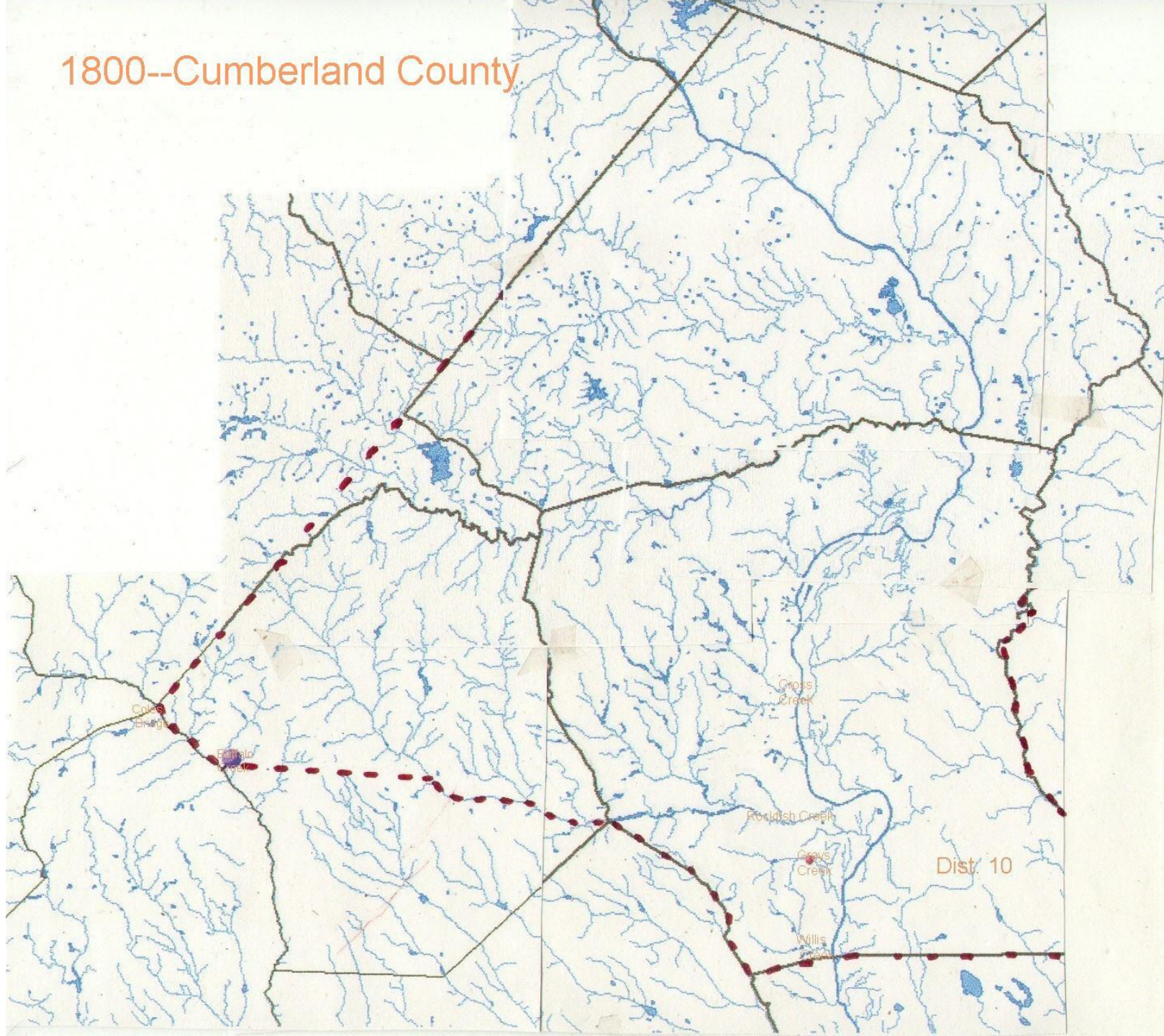
LEGEND

- STATE HIGHWAYS
- COUNTY " "
- " " " "
- " " " "
- COUNTY ROAD TYPES
- HARD SURFACE
- TS - SC - GRAVEL
- GRADED
- UNIMPROVED
- CONSOL. SCHOOLS

[https://www.carolana.com/NC/Counties/Cumberland
and County Road Map 1930.html](https://www.carolana.com/NC/Counties/Cumberland_and_County_Road_Map_1930.html)

[https://www.carolana.com/NC/Counties/Cumberland_County_
Road_Map_1930.html](https://www.carolana.com/NC/Counties/Cumberland_County_Road_Map_1930.html)

1800--Cumberland County



<http://www.ncgenweb.us/cumberland/1800mapcumb.html>

Historic map overly near Evans Lake

- https://web.lib.unc.edu/nc-maps/interactive/Cm912c_F28_1825.php
- This map overlays the historic map from the 1st slide. The town of Flea Hill (Eastover) where Needham Bass is known to have lived, is 5 miles northeast of where present day I95 crosses the Cape Fear River